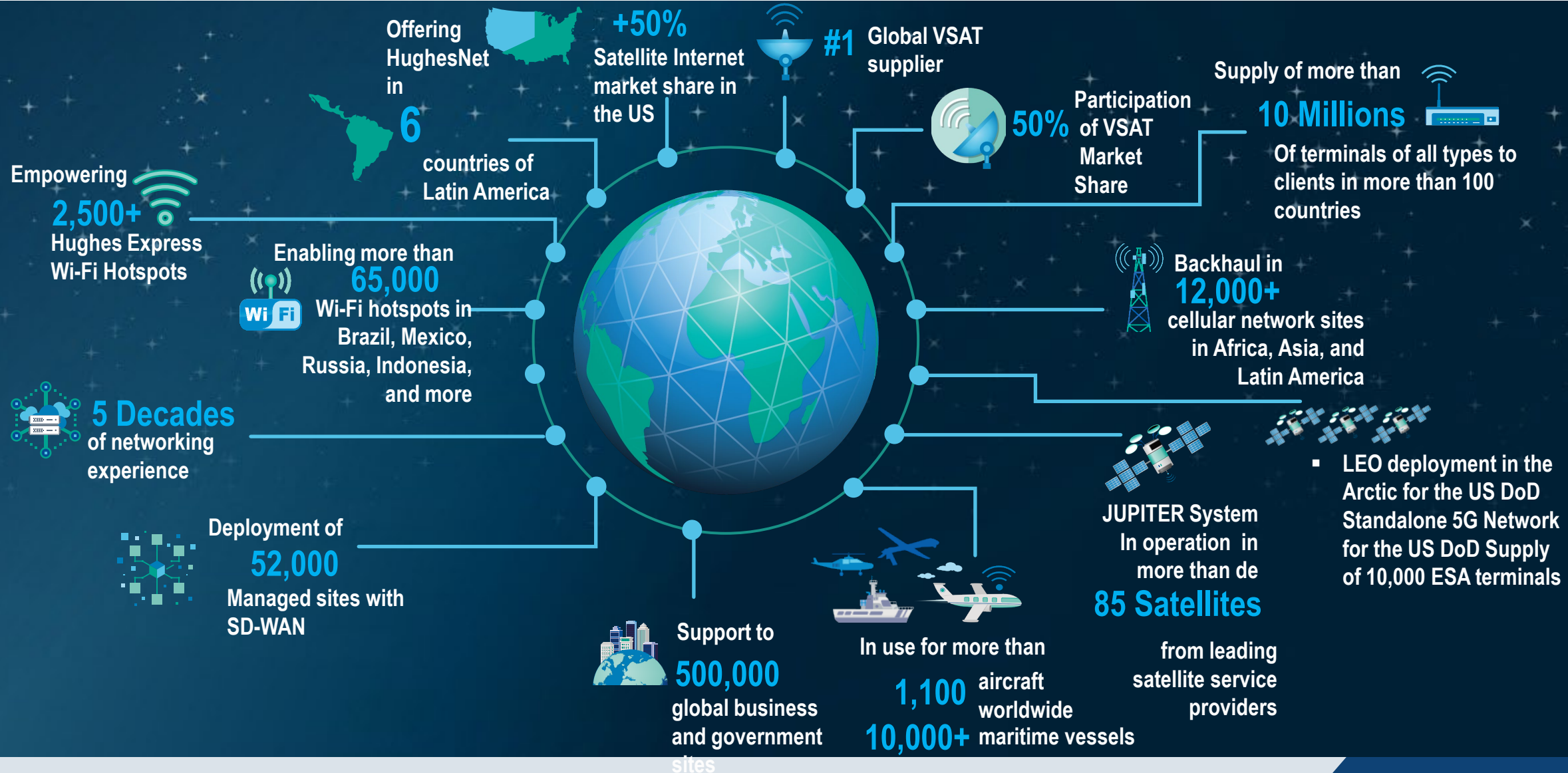


Business Status



Benefits of JUPITER System for Cell Backhaul

High Performance

- 400 Mbps+ throughput per terminal with acceleration
- 600 ms latency (round trip), 10 ms jitter (one way)
- 16K simultaneous TCP connections at VSAT

High Efficiency

- TDMA with support of QPSK/8PSK/up to 256APSK
- TDM (DVB-S2X) return, up to 100 Msps
- Dynamic TDMA <-> TDM return channel switching

Powerful Cell Backhaul Features

- Acceleration, Compression, QoS
- IEEE 1588v2 Precision Time Protocol
- Four independent subnets at the VSAT

Multiple Terminal Options

- 19-inch Rackmount, All Outdoor (IP67)
- AC, +24V DC, -48V DC Power Supply options

Flexible Configuration

- Layer 2 (MEF)
- Layer 3
- 2G,3G,4G and 5G.